



Series/Serie

M

ROTARY UNIONS FOR CONTINUOUS CASTING MACHINES
Giunto rotante per per impianti a colata continua



M

ROTARY UNION FOR CONTINUOUS CASTING MACHINES Giunto rotante per impianti di colata continua

The Girol M Series has been designed for mounting in the roll cylinder of continuous casting machines. To withstand dirty water, the seals are made of silicon carbide. The housing is traditionally made in brass. Special versions are available upon request.

I giunti GIROL della serie M sono progettati per essere incassati nei rulli delle linee di colata continua. Le tenute sono in carburo di silicio per resistere alle acque sporche delle acciaierie. Lo standard prevede il materiale costruttivo è l'ottone, sia per la parte fissa che per la parte rotante. Su richiesta si eseguono versioni speciali.

MAX FLUID PRESSURE

► WATER 10

MAX TEMPERATURE

► WATER 120 °C

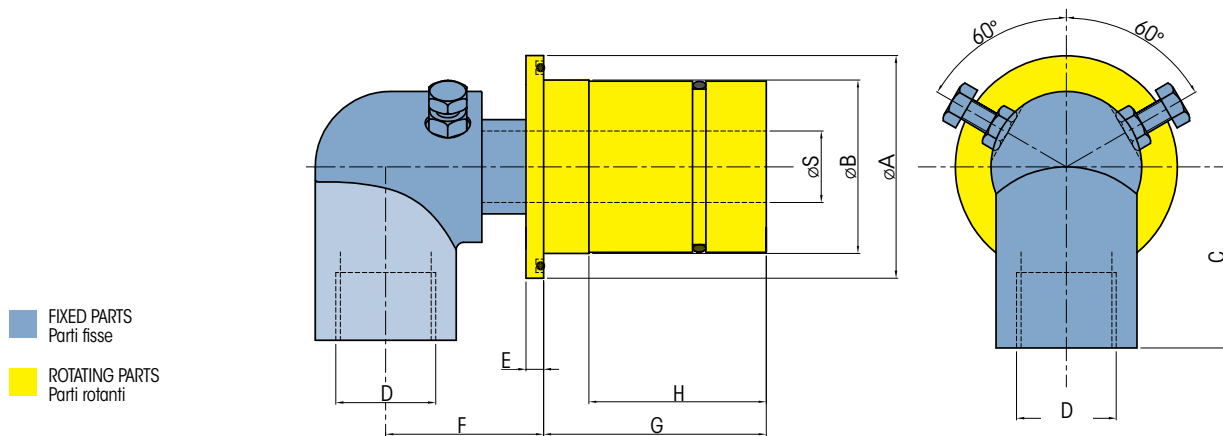
MAX SPEED

► WATER 100 rpm



MONOFLOW IN SHAFT MOUNTING

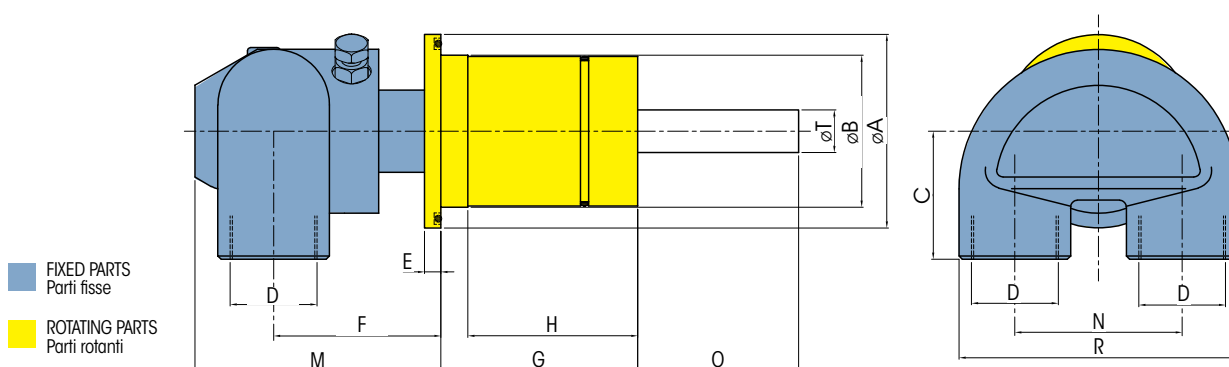
Giunto monovia, montaggio incassato



CODE Codice	A	B	C	D	E	F	G	H	S
MM0050-LB2LX	59	46,2	38	3/4" BSP	4	47	60	62	19
	2,322	1,811	1,496		0,157	1,850	2,362	2,440	0,748
MM0075-LB2LX	73	58,8	38	3/4" BSP	5	47	78	82	25
	2,874	2,322	1,476		0,196	1,850	3,070	3,228	0,984
MM0100-LB2LX	86	71	47	1" BSP	5	61	87	93,5	38
	3,385	2,795	1,850		0,196	2,401	3,444	3,581	1,496

DOUBLE FLOW IN SHAFT MOUNTING

Giunto a due vie, montaggio incassato



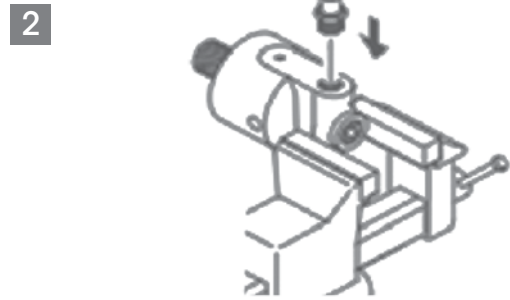
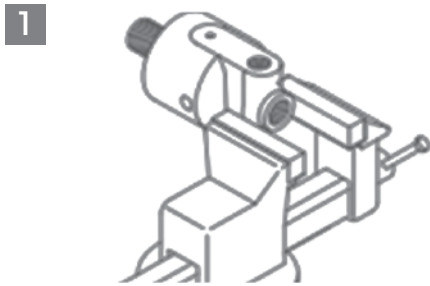
CODE Codice	A	B	C	D	E	F	G	H	M	N	O	P	R	S	Th9
MD0050-LB2LX	59	46,2	38	3/4" BSP	4	42	60	62	66	51	48	108	85	19	13
	2,322	1,811	1,496		0,157	1,652	2,362	2,440	2,596	2,007	1,889	4,251	3,346	0,748	0,511
MD0075-LB2LX	73	58,8	38	3/4" BSP	5	42	78	82	82	51	61	139	85	25	19
	2,874	2,322	1,476		0,196	1,652	3,070	3,228	3,228	2,007	2,401	5,472	3,346	0,984	0,748
MD0100-LB2LX	86	71	47	1" BSP	5	66	87	93,5	96	64	62,5	150	101	38	28,7
	3,385	2,795	1,850		0,196	2,593	3,444	3,581	3,779	2,519	2,460	5,905	3,976	1,496	1,128



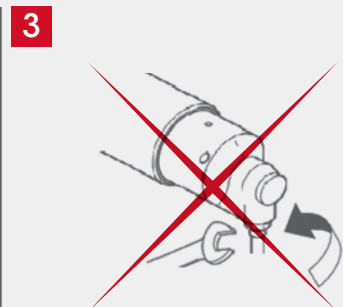
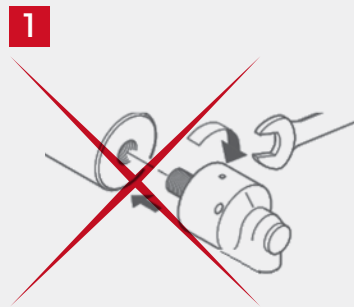
INSTALLATION

Installazione

HOW TO INSTALL // COME INSTALLARE



HOW TO **NOT** INSTALL // COME **NON** INSTALLARE



PIPES MUST BE FLEXIBLE!
ITUBI DEVONO ESSERE FLESSIBILI