



Series/Serie

**D**

**DUAL INDEPENDENT FLOW ROTARY UNIONS**  
Giunti rotanti a doppio passaggio indipendente



# D

## DUAL INDEPENDENT FLOW ROTARY UNIONS Giunti rotanti a doppio passaggio indipendente

The standard supply provides the rotating nipple threaded cylindrical GAS. On the request we supply other standard. Standard seal (graphite vs. stainless steel) is used for air and for water or hydraulic oil, seal of silicon carbide vs. silicon carbide is suggested. For liquid at pressure more than 60 bar (870 PSI) please contact our technician

La fornitura standard comprende il rotore con filettatura cilindrica GAS. Su richiesta forniamo rotori filettati secondo altri standard. La tenuta standard (grafite su acciaio Inox) si utilizza per aria e per acqua con filtraggio pari ad almeno 20 micron. Per liquidi con pressioni superiori a 60 bar si consiglia di consultare un nostro tecnico.

### MAX FLUID PRESSURE

- ▶ AIR - WATER - OIL - FLUIDS 12 bar
- ▶ VACUUM 700 mm/hg

### MAX SPEED

- ▶ AIR - WATER - OIL - FLUIDS 2.500 rpm
- ▶ Above 1.000 rpm contact Tech Dept

### MAX TEMPERATURE

- ▶ AIR - WATER - OIL - FLUIDS 100 °C

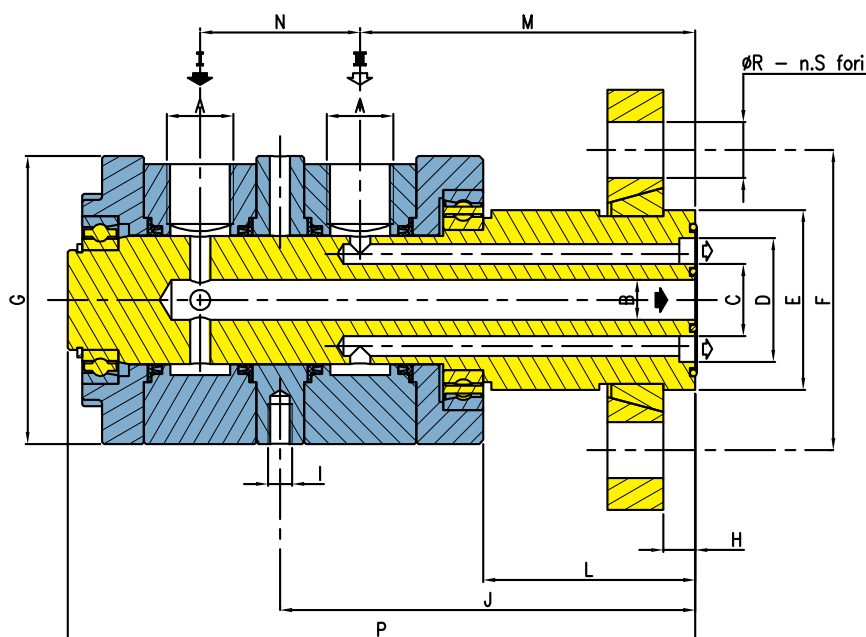


# VERSION FOR HYDRAULIC OIL

## Versione per olio idraulico

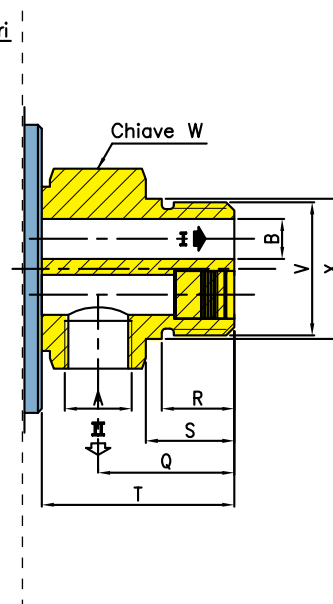
1

### FLANGED VERSION Versione attacco a flangia



2

### THREAD VERSION Versione attacco filettato



### 1 FLANGED VERSION / Versione attacco a flangia

SILICON-SILICON Silicio-silicio	A	B	C	D	E [F7]	F	G	H	I	J	K	L	M	N	O	P
D-0025-GY2LS	1/4" BSP	6 0,236	13,3 0,524	22,7 0,894	36 1,417	65 2,559	72 2,835	6 0,236	M6	100 3,937	49 1,929	80 3,150	40 1,575	153 6,024	14 0,551	4
D-0037-GY2LS	3/8" BSP	10 0,394	18 0,709	31 1,220	45 1,772	75 2,953	72 2,835	8 0,315	M6	104 4,094	53 2,087	84 3,307	40 1,575	157 6,181	14 0,551	4
D-0050-GY2LS	1/2" BSP	13 0,512	21,5 0,846	40,5 1,594	52 2,047	85 3,346	85 3,346	8 0,315	M10	115 4,528	54 2,126	89,5 3,524	50 1,969	178 7,008	14 0,551	4
D-0075-GY2LS	3/4" BSP	18 0,709	27 1,063	45 1,772	59 2,323	100 3,937	93 3,661	10 0,394	M10	135 5,315	66 2,598	105 4,134	60 2,362	208 8,189	18 0,709	4
D-0100-GY2LS	1" BSP	24 0,945	33 1,299	54 2,126	65 2,559	100 3,937	126 4,961	10 0,394	M10	147 5,787	64 2,520	113,7 4,476	66,5 2,618	235,5 9,272	18 0,709	4

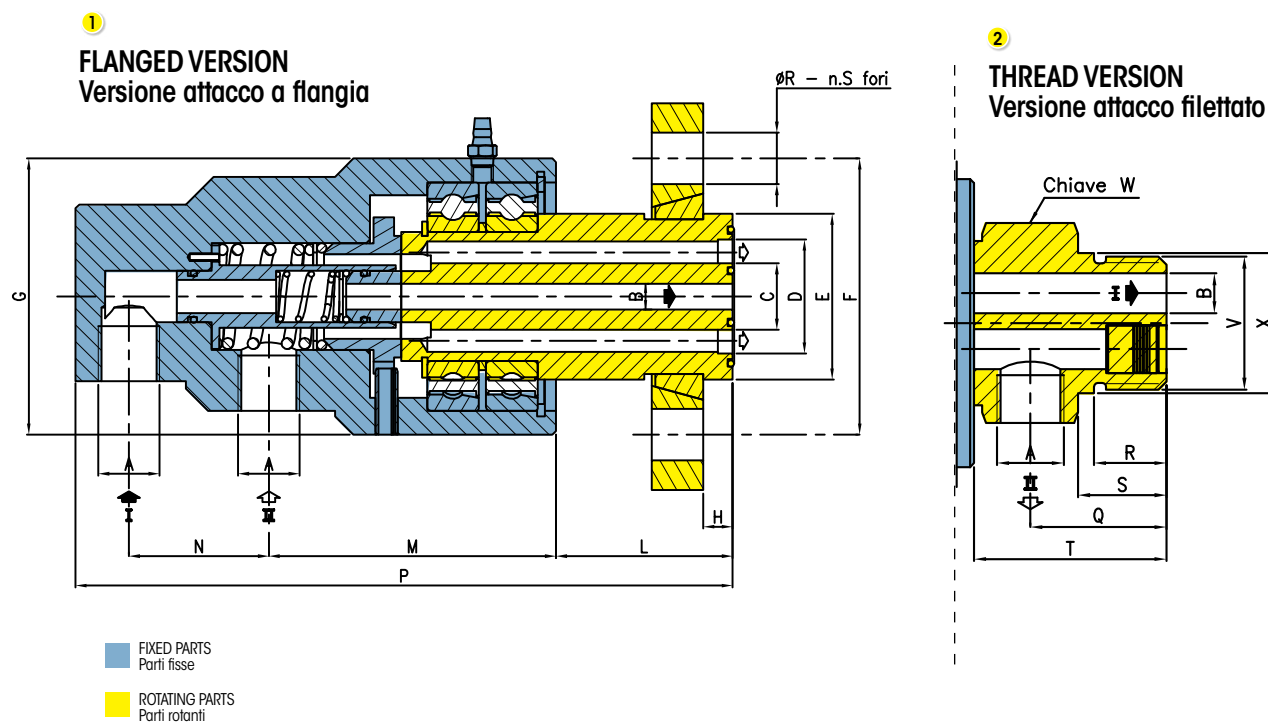
### 2 THREAD VERSION / Versione attacco filettato

SILICON-SILICON Silicio-silicio	A	B	Q	R	S	T	W	V	X [F7]	Y	RPM Giri/min
D-D025-GY2GS	1/4" BSP	8 0,315	33 1,299	17 0,669	21 0,827	47 1,850	50	3/4" BSP	30 1,181	98 3,858	2.800
D-D037-GY2GS	3/8" BSP	10 0,394	34 1,339	18 0,709	22 0,866	48 1,890	50	1" BSP	35 1,378	99 3,898	2.100
D-D050-GY2GS	1/2" BSP	13 0,512	44 1,732	20 0,787	25 0,984	61 2,402	60	1 1/4" BSP	45 1,772	122 4,803	1.700
D-D075-GY2GS	3/4" BSP	18 0,709	51 2,008	24 0,945	30 1,181	72 2,835	65	1 1/2" BSP	50 1,969	141 5,551	1.500
D-D100-GY2GS	1" BSP	24 0,945	63 2,480	31 1,220	39 1,535	91 3,583	82	2" BSP	60 2,362	174 6,850	1.200

For left thread, the second letter of code change replacing "D" with "S"  
Per filettature sinistre, la seconda lettera del codice varia sostituendo "D" con "S"

# VERSION FOR AIR, WATER AND VACUUM

Versione per aria, acqua e vuoto



## 1 FLANGED VERSION / Versione attacco a flangia

GRAPHITE-INOX Grafite-inox	A	B	C	D	E	F	G	H	I	J	K	L	M	N
D-0025-GY3LS	1/4" BSP	6 0.236	12,5 0.492	22 0.866	36 1.417	65 2.559	60 2.362	6 0.236	43 1.693	62 2.441	30 1.181	148 5.827	14 0.551	4
D-0037-GY3LS	3/8" BSP	10 0.394	17 0.669	30 1.181	45 1.772	75 2.953	75 2.953	8 0.315	48 1.890	78 3.071	38 1.496	178 7.008	14 0.551	4
D-0050-GY3LS	1/2" BSP	13 0.512	22 0.866	39 1.535	52 2.047	85 3.346	88 3.465	8 0.315	48 1.890	88 3.465	40 1.575	194 7.638	14 0.551	4
D-0075-GY3LS	3/4" BSP	18 0.709	26 1.024	44 1.732	58 2.283	100 3.937	94 3.701	10 0.394	57 2.244	93 3.661	48 1.890	224 8.819	18 0.709	4
D-0100-GY3LS	1" BSP	24 0.945	33 1.299	53 2.087	65 2.559	100 3.937	110 4.331	10 0.394	57 2.244	100 3.937	58 2.283	246 9.685	18 0.709	4

## 2 THREAD VERSION / Versione attacco filettato

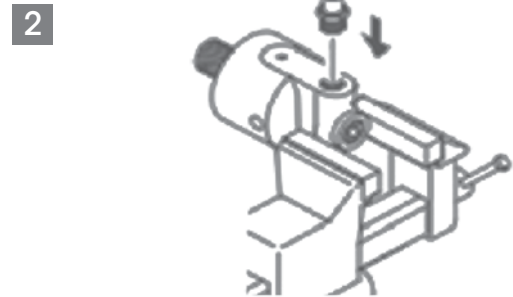
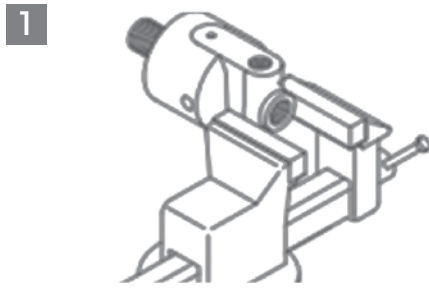
GRAPHITE-INOX Grafite-inox	A	B	T	U	V	Z	W	X	Y	RPM Giri/min
D-D025-GY3GS	1/4" BSP	6 0.236	11 0.433	23 0.906	4 0.157	14 0.551	36	3/4" BSP	30 1.181	2.800
D-D037-GY3GS	3/8" BSP	10 0.394	13 0.512	30 1.181	4 0.157	18 0.709	55	1" BSP	35 1.378	2.100
D-D050-GY3GS	1/2" BSP	13 0.512	18 0.709	40 1.575	5 0.197	22 0.866	65	1 1/4" BSP	45 1.772	1.700
D-D075-GY3GS	3/4" BSP	18 0.709	21 0.827	51 2.008	6 0.236	25 0.984	70	1 1/2" BSP	50 1.959	1.500
D-D100-GY3GS	1" BSP	24 0.945	25 0.984	56 2.205	8 0.315	28 1.102	90	2" BSP	60 2.362	1.200



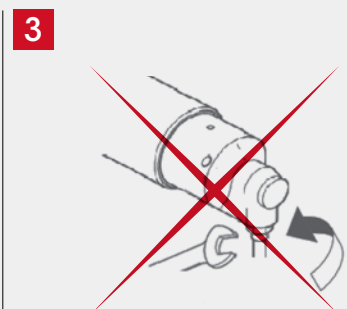
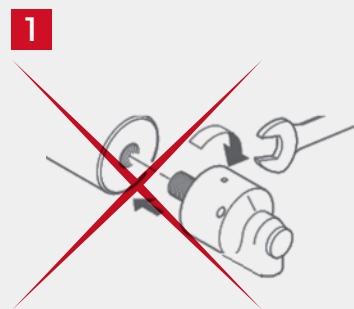
# INSTALLATION

Installazione

## HOW TO INSTALL // COME INSTALLARE



## HOW TO **NOT** INSTALL // COME **NON** INSTALLARE



**PIPES MUST BE FLEXIBLE!**  
**ITUBI DEVONO ESSERE FLESSIBILI**